

Hebrew Alphabet

Alef Bet Gimel

א ב ג

Dalet He Vav

ד ה ו

Zayin Chet Tet

ז ח ט

Yod Kaf Lamed

י כ ל

Mem Nun Samech

מ נ ס

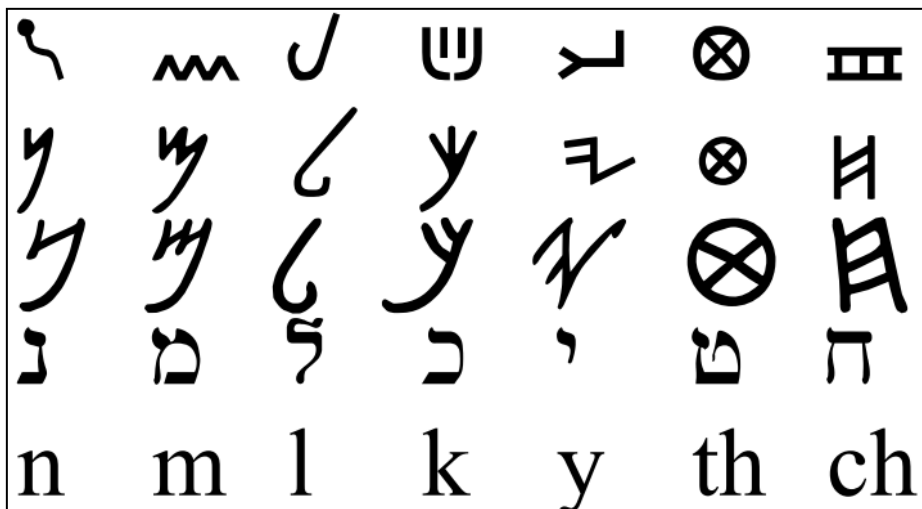
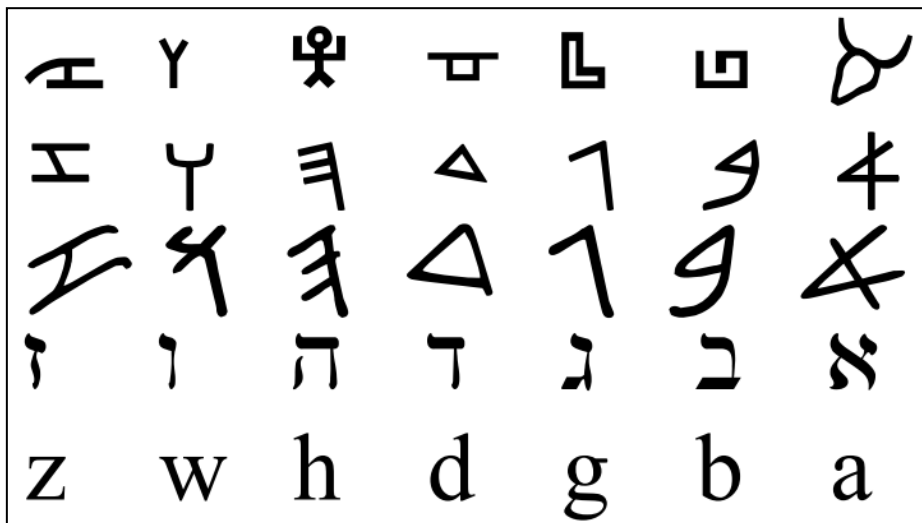
Ayin Pay Tsade

ע פ צ

Qof Resh Shin

ק ר ש

Tav ת



The meaning (symbol) of the ancient Hebrew letters/shapes:

- Aleph (א):** oxen/priest: beginning, conception, seed planting, Word.
- Bet (ב):** house/tent: body, ram, development/form
- Gimel (ג):** camel: throat, canal, ascend
- Dalet (ד):** tent/door: passageway, exit, entrance
- He (ה):** light rays: life, gifts, stars, illumination
- Waw (ו):** cup: hook, balance of life, bonds, conjunction, join
- Zayin (ז):** sword: knife, tongue, word, Law, rest, perfection
- Cheta (ח):** ladder: ascend, descend, work, labor, window
- Theta (ט):** united heads, male and female into one, sex, security, trust
- Yod (י):** hand: open right hand, give, receive, attainment, action, blessing
- Kayin (כ):** palm: leaf, productivity, fruitfulness, teachings, reproducing
- Lamed (ל):** staff/rod: direction, instruction, teach, discipline, protection, refrain, comfort
- Mem (מ):** water: above and below firmament, fullness of life, oil, flow, cleansing, anoint
- Nun (נ):** fish: potentiality, son of man symbol, capable of moving in many directions
- Samek (ס):** support/pillar: fortification, shelter, skeleton, spine, branch, tower
- Ayin (ע):** egg/pupil: openings to ear/mouth/anus, etc., heart, eye full of light or darkness
- Pe (פ):** mouth: cup, container, voice, soul, intake, partake, utterance, appearance
- Tsade (צ):** host/insect: transformation, jointed leg, winged creature, warrior, victory
- Kof (ק):** priest's cap: crown, kingdom, domain, dome, nest, priesthood
- Resh (ר):** head: first part, beginning, mind, knowledge, discretion, self, individual
- Shin (ש):** tooth: wisdom, digest, fire, sun, glory, strength, lion, consume
- Taw (ת):** 4 directions/corners (N, W, S, E): all, totality, completion, sign, mark